
E1550 Software Upgrade Procedure



To upgrade your firmware, please ensure that you have the following files:

- a. Update_11.608.14.15.311.B418.exe
- b. UTPS11.300.05.08.311_MAC11.303.08.03.311.zip


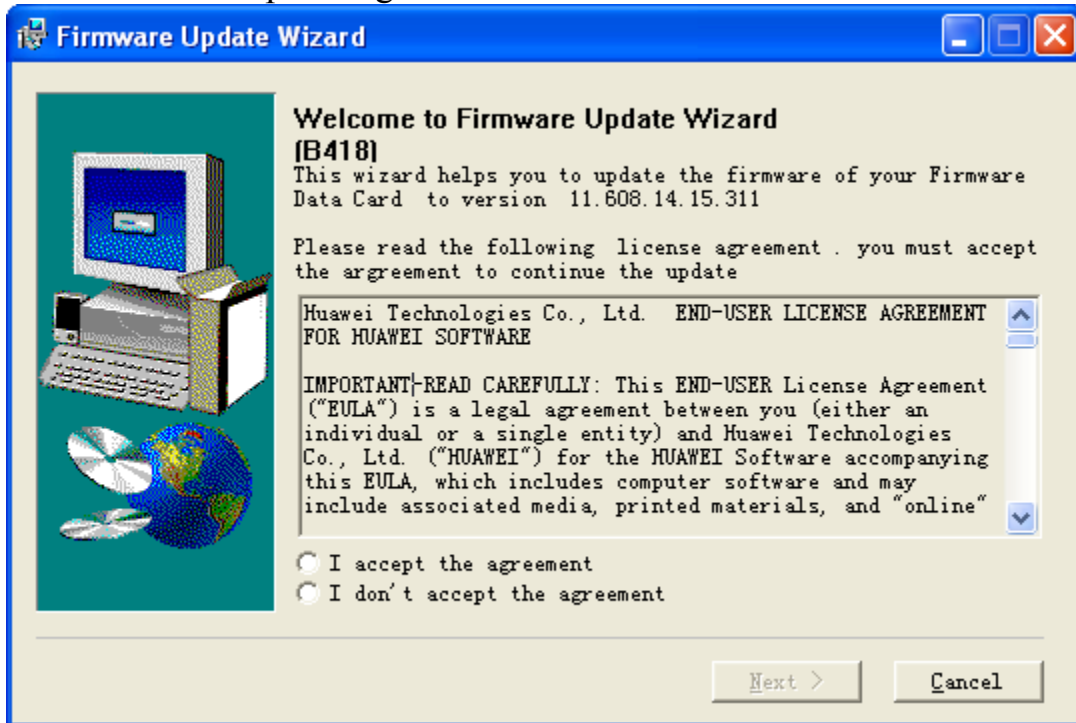
If you do not have these files, download them from [here](#).

This guide will take you through the following 3 processes:

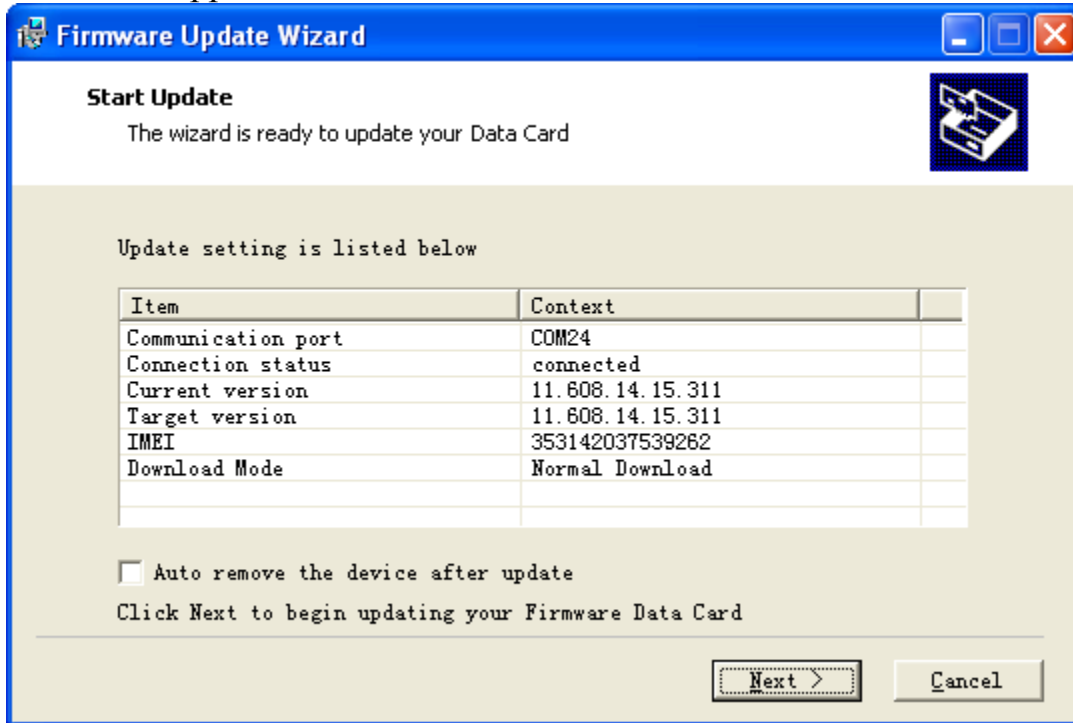
- a. Firmware upgrade
- b. Connection Manager upgrade
- c. Re-install Connection Manager

Modem Firmware Upgrade

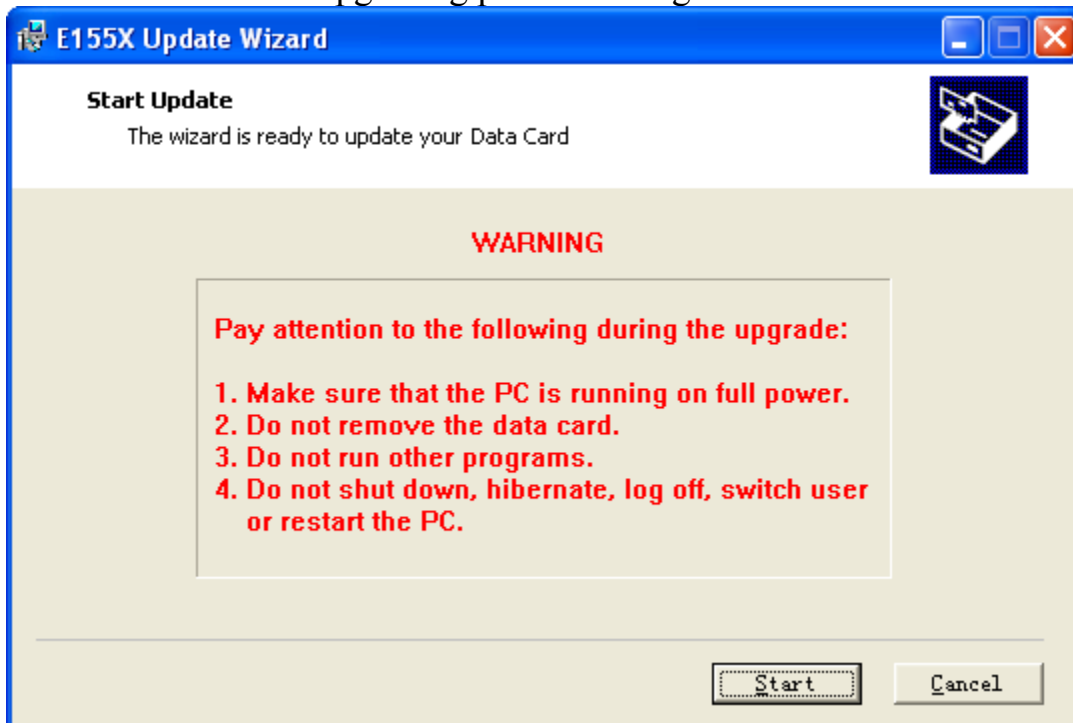
1. Connect the E1550 USB Modem to the computer.
2. Exit your DiGi Internet Connection Manager program in order for your computer to detect the COM port.
3. Extract the downloaded E1550.zip file.
4. Double click on the exe file **Update_11.608.14.15.311.B418.exe**
5. A window screen will pop up.
6. Select the “I accept the agreement” tab and click “Next” to continue.

 Update_11.608.14.15.311.B418

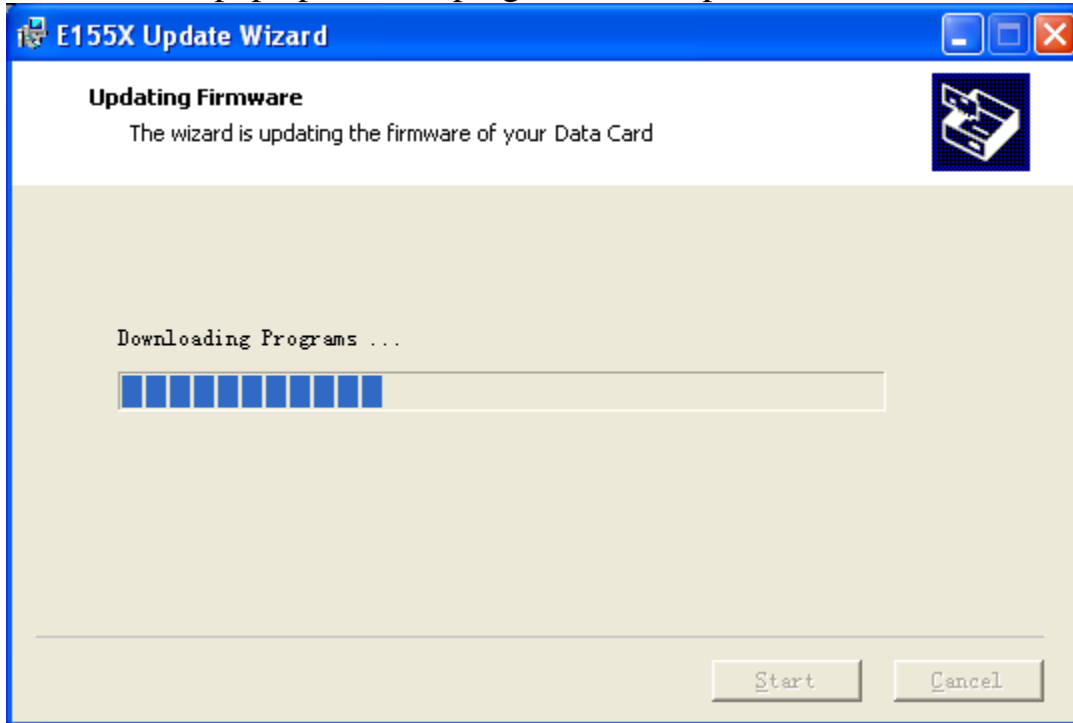
7. Your E1550 USB modem COM port will be detected automatically and the details below will appear. Click “Next” to continue.



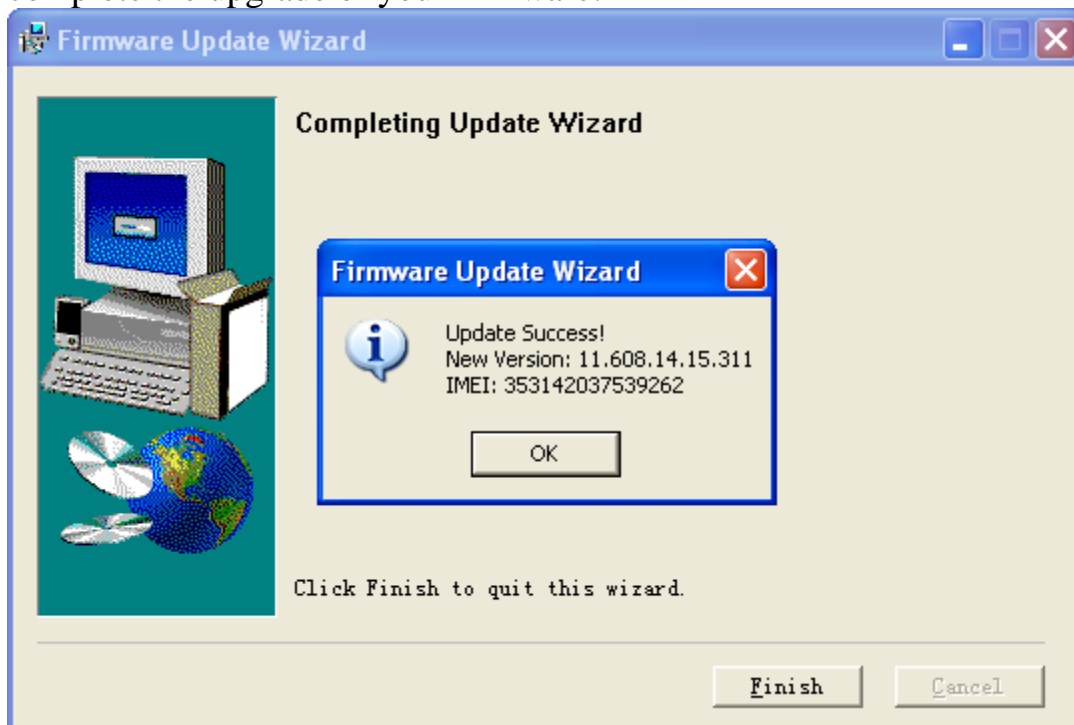
8. Click “Start” for the upgrading process to begin.



9. A screen will pop up to show progress of the update.



10. Once completed, an "Update Success!" pop-up will appear. Click "OK", then "Finish" to complete the upgrade of your firmware.



E155X Update Wizard



Completing Update Wizard


Click Finish to quit this wizard.

Finish

Cancel

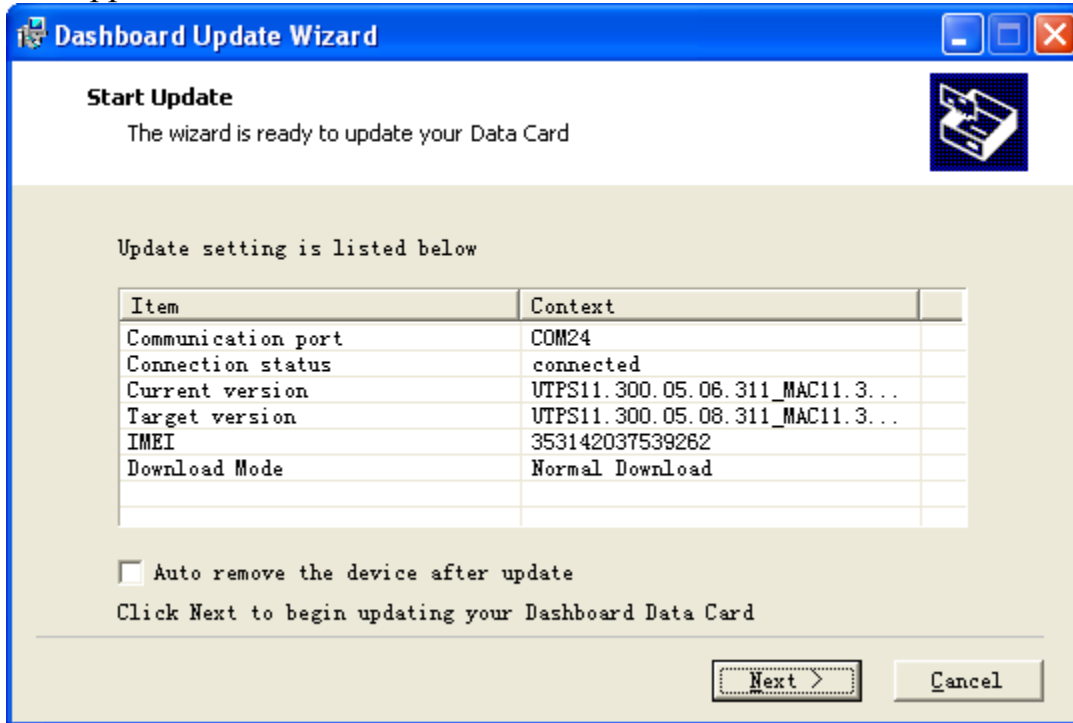
Connection Manager Software Upgrade

1. Connect the E1550 USB Modem to the computer.
2. Exit your DiGi Internet Connection Manager program in order for your computer to detect the COM port.
3. Extract the downloaded file.
4. Double click on the exe file **UTPS11.300.05.08.311_MAC11.303.08.03.311**
5. A window screen will pop up.
6. Select the “I accept the agreement” tab and click “Next” to continue.

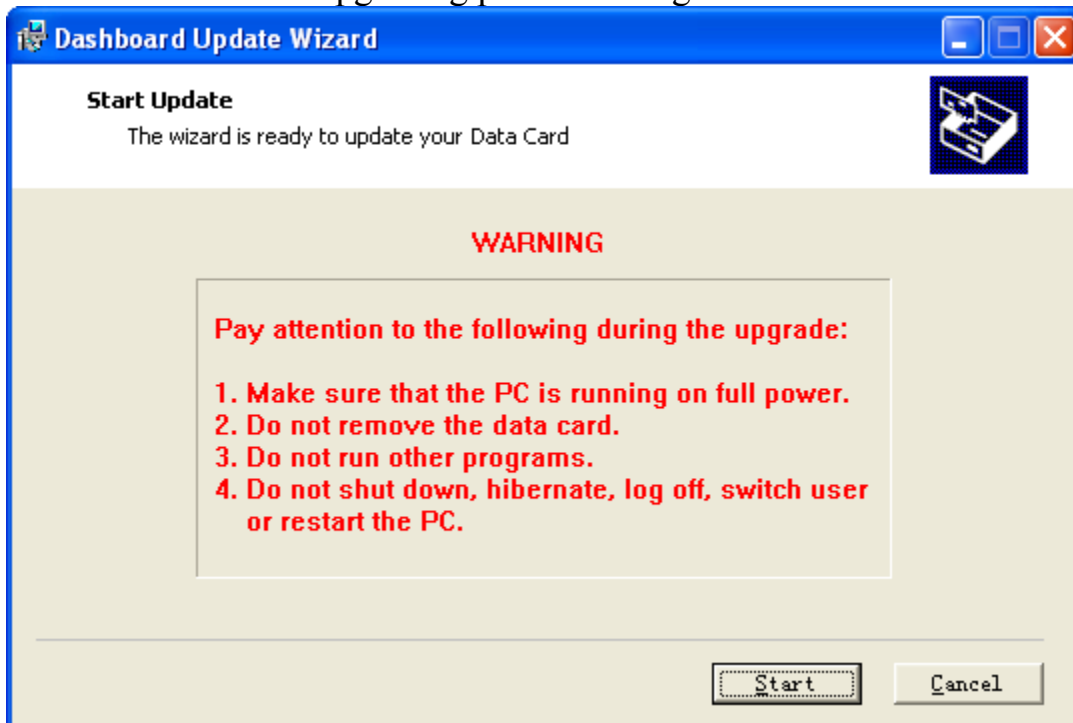
 UTPS11.300.05.08.311_MAC11.303.08.03.311



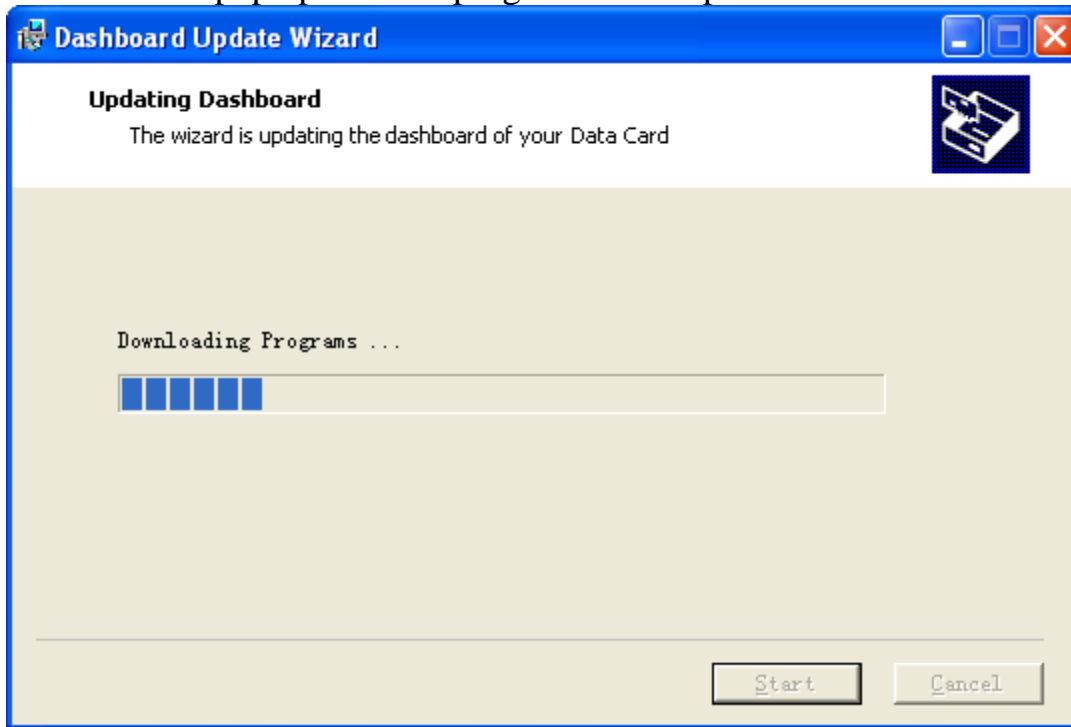
7. Your E1550 USB modem COM port will be detected automatically and the details below will appear. Click “Next” to continue.



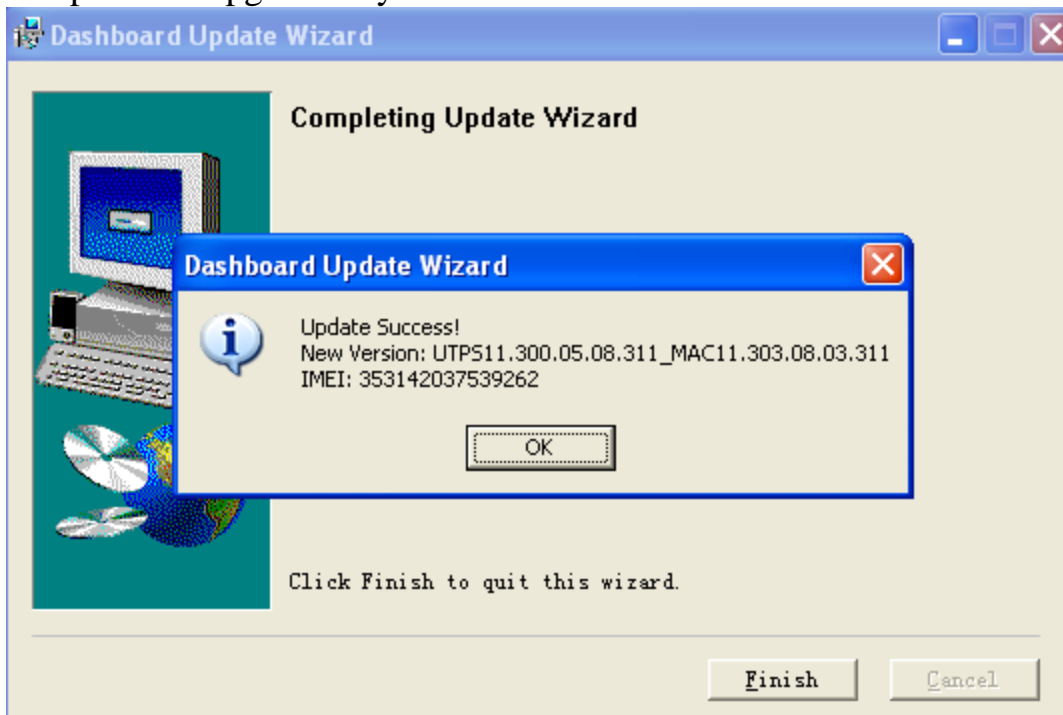
8. Click “Start” for the upgrading process to begin.



9. A screen will pop up to show progress of the update.



10. Once completed, an “Update Success!” pop-up will appear. Click “OK”, then “Finish” to complete the upgrade of your firmware.



Dashboard Update Wizard



Completing Update Wizard

Click Finish to quit this wizard.

Finish

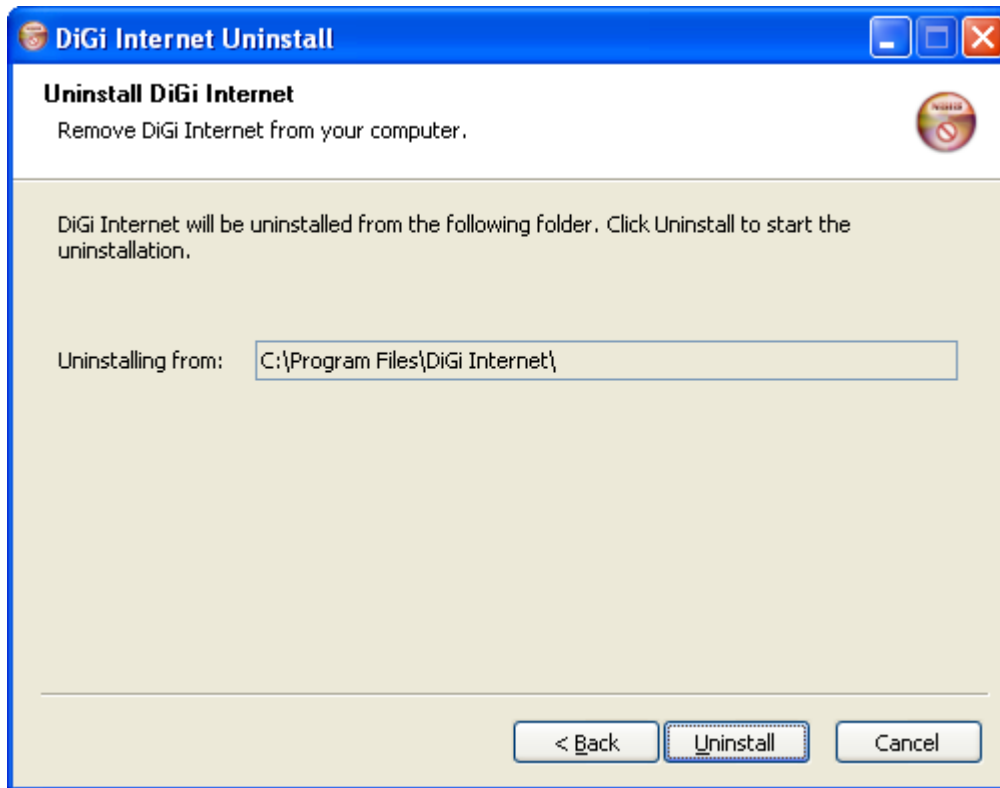
Cancel

Un-install and Re-install Connection Manager

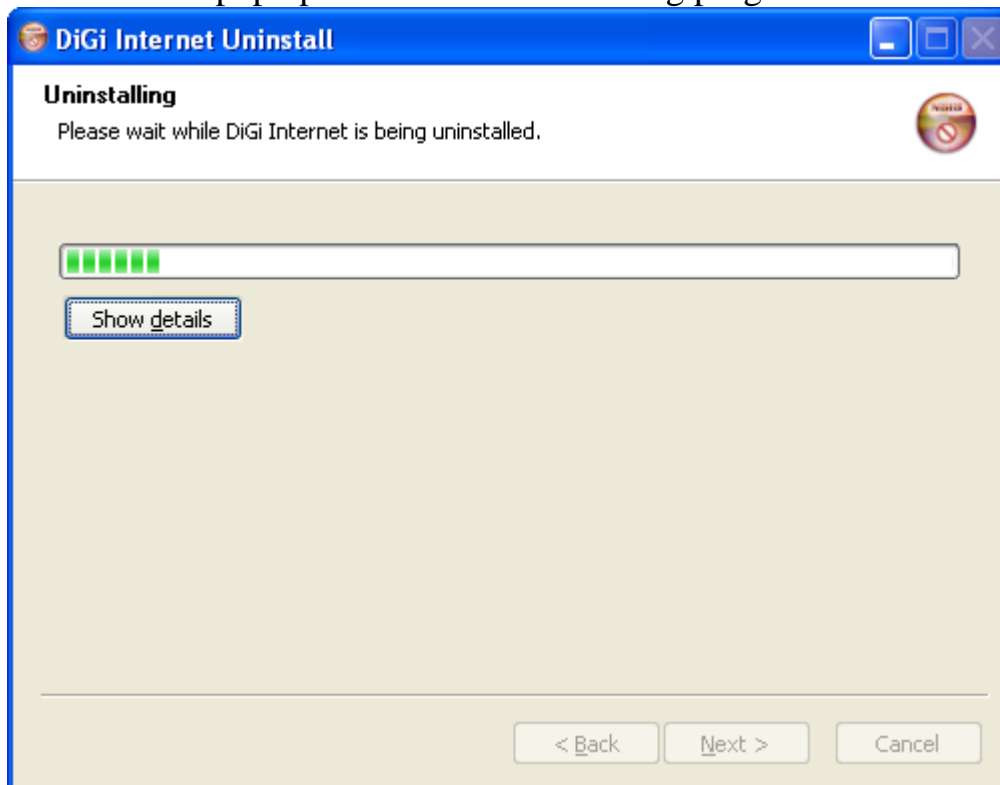
1. Go to Start>All Programs>DiGi Internet> and click “Uninstall”.
2. A window screen will pop up.
3. Click on “Next”.



4. Then click “Uninstall”.



5. A screen will pop up to show the uninstalling progress.



6. Click "Finish".

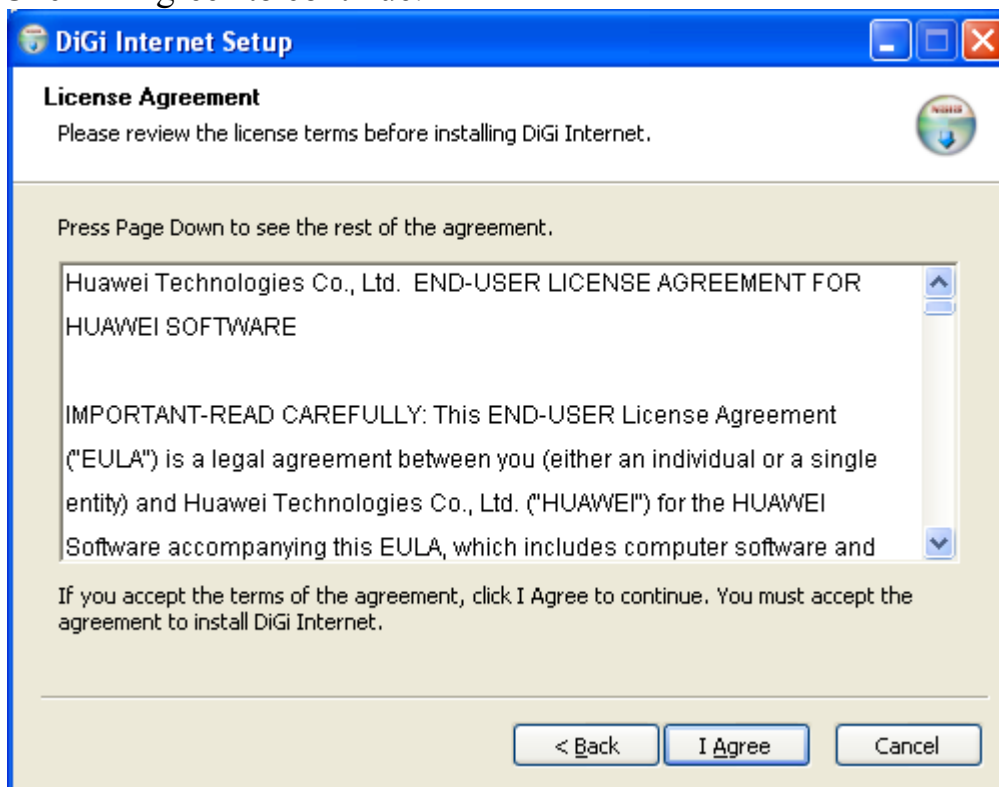


7. Manually remove E1550 USB Modem and restart your computer.
8. Once the computer has restarted, plug in the E1550 USB modem into your computer again.
9. Wait for the driver to be detected and installation will autorun. Please click on your CD-drive if this does not occur.
10. A window screen will pop up.

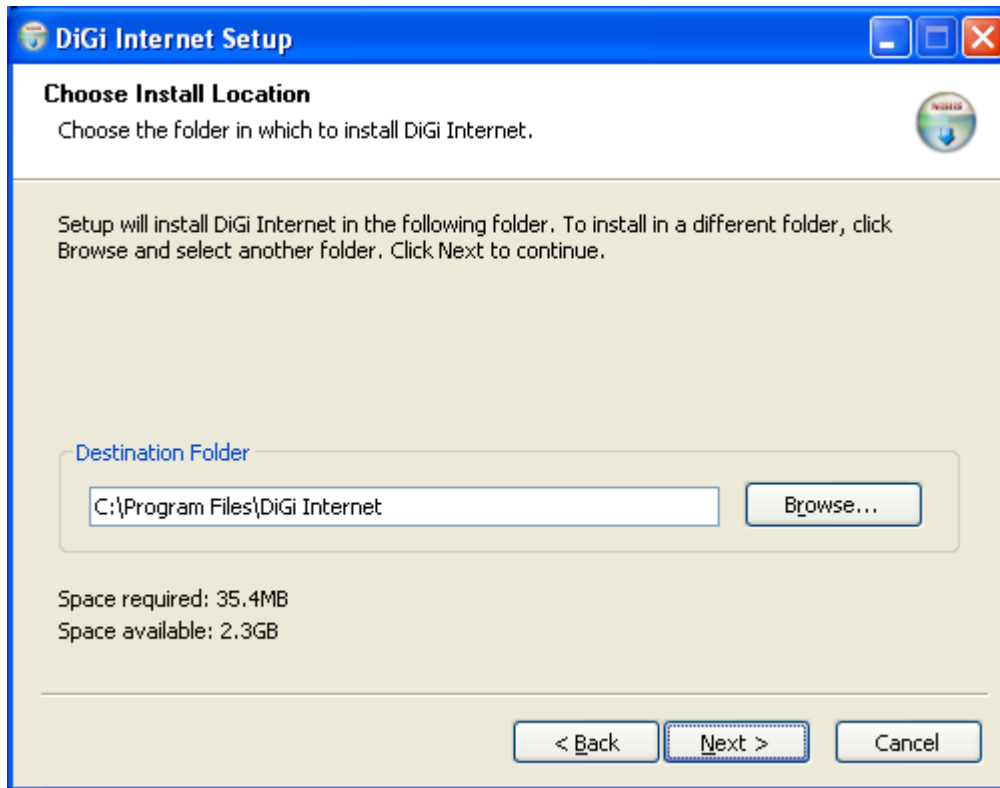
11. Click “Next” to continue.



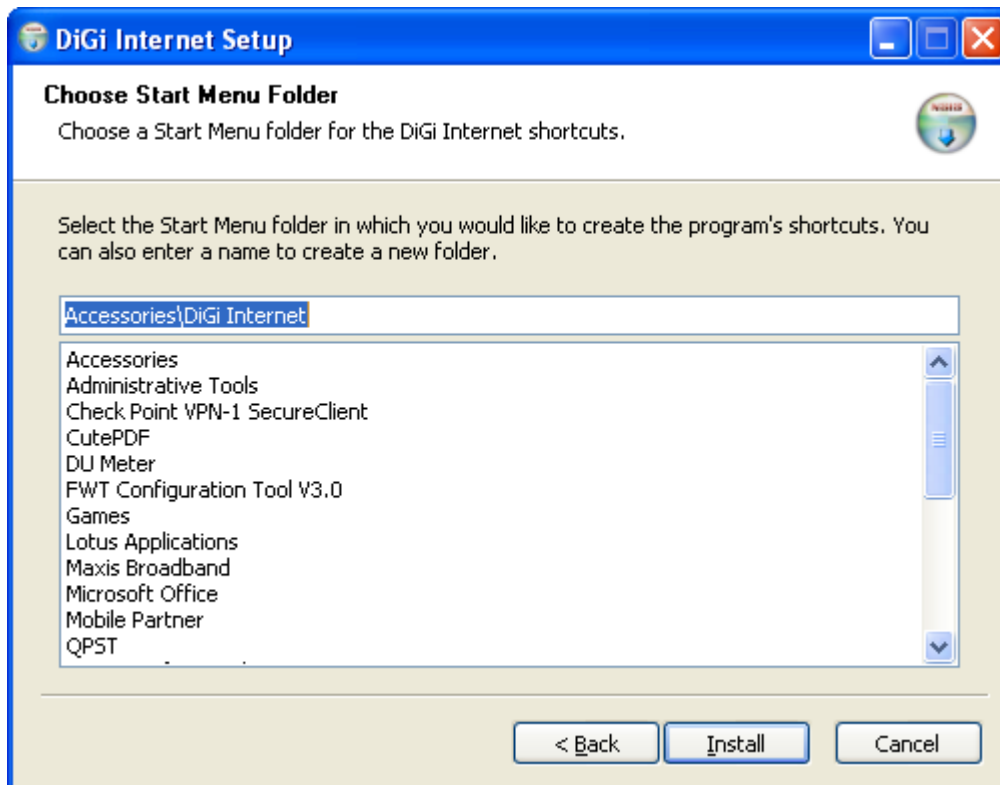
12. Click “I Agree” to continue.



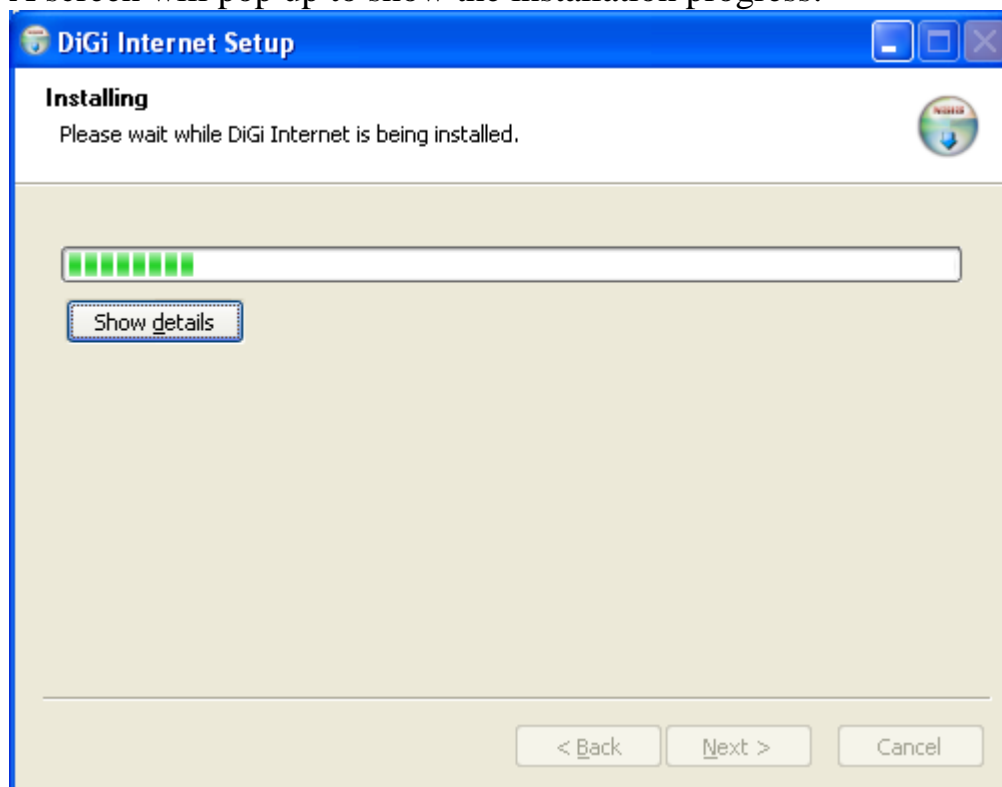
13. Then click “Next” to continue.



14. Click “Install” to continue.



15. A screen will pop up to show the installation progress.



16. Click "Finish".

