
E160 Software Upgrade Procedure



To upgrade your firmware, please ensure that you have the following files:

- a. Update_11.609.10.00.311.B418.exe
- b. UTPS11.300.05.08.311_MAC11.303.08.03.311.zip

If you do not have these files, please download them [here](#).

This guide will take you through the following 3 processes:

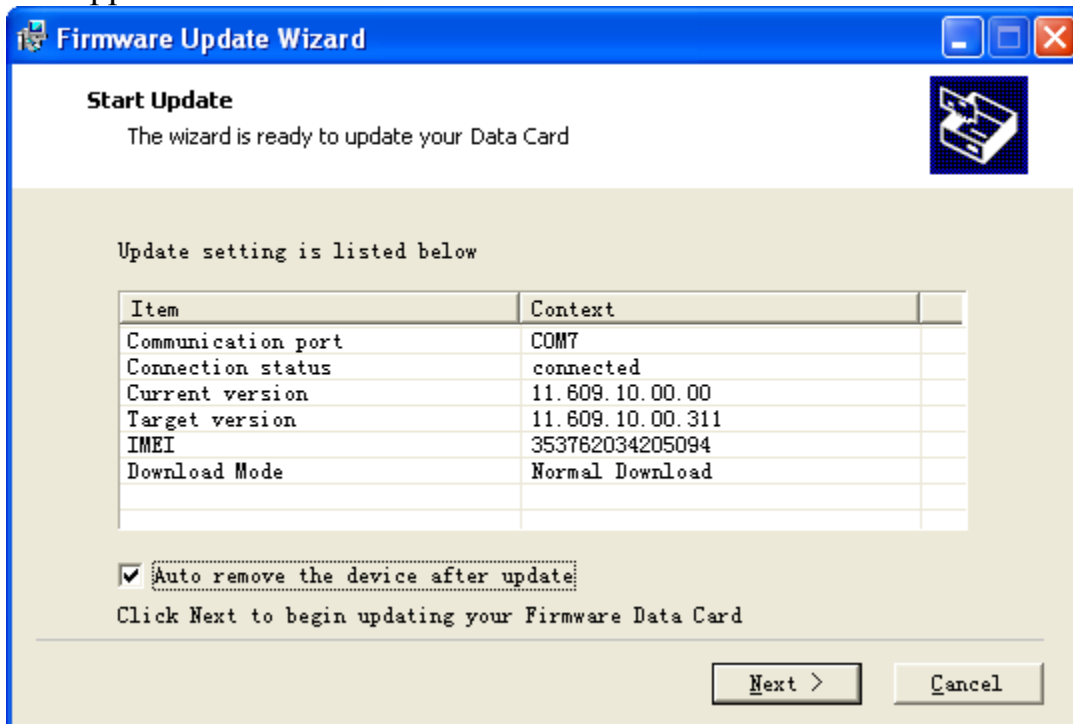
- a. Upgrade your firmware
- b. Upgrade your Connection Manager
- c. Re-install your Connection Manager

Modem Firmware Upgrade

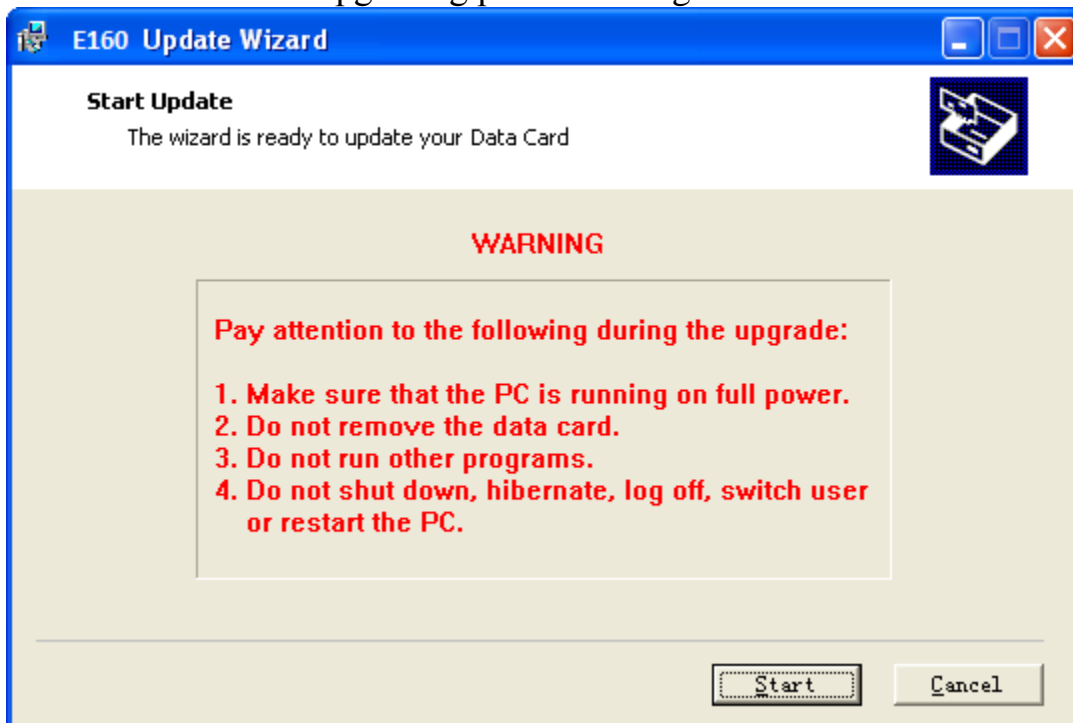
1. Connect the E160 USB Modem to the computer.
2. Exit your DiGi Internet Connection Manager program in order for your computer to detect the COM port.
3. Extract the downloaded E160E.zip file.
4. Double click on the exe file **Update_11.609.10.00.311.B418.exe**
5. A window screen will pop up.
6. Select the “I accept the agreement” tab and click “Next” to continue.

 Update_11.609.10.00.311.B418

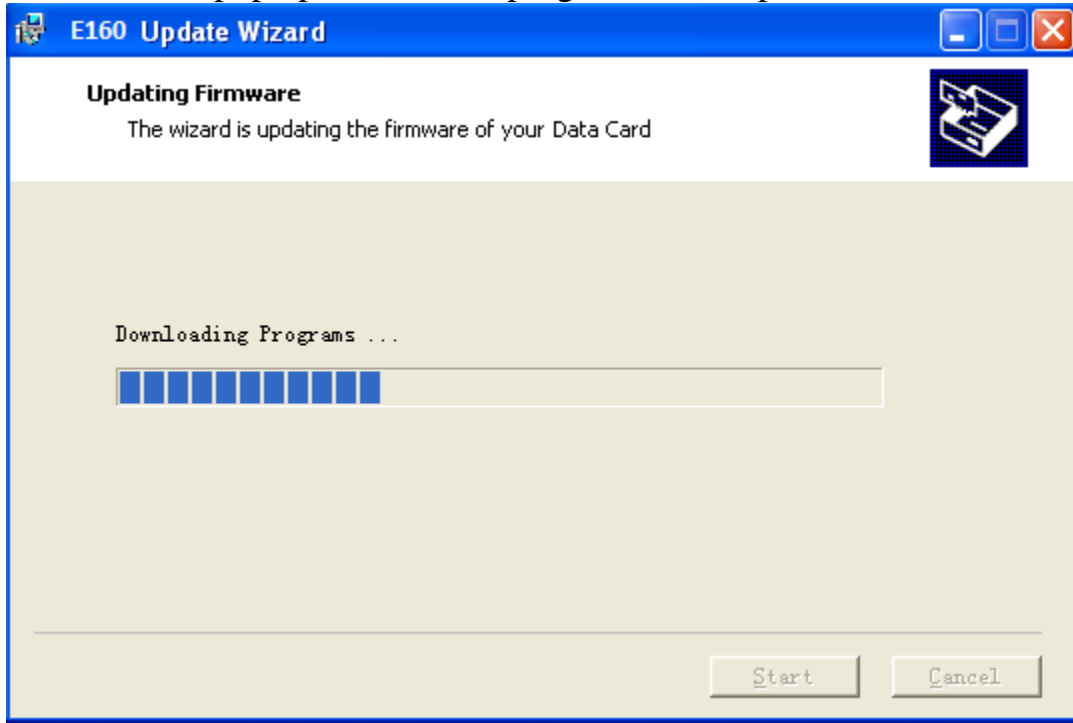
7. Your E160 USB modem COM port will be detected automatically and the details below will appear. Click “Next” to continue.



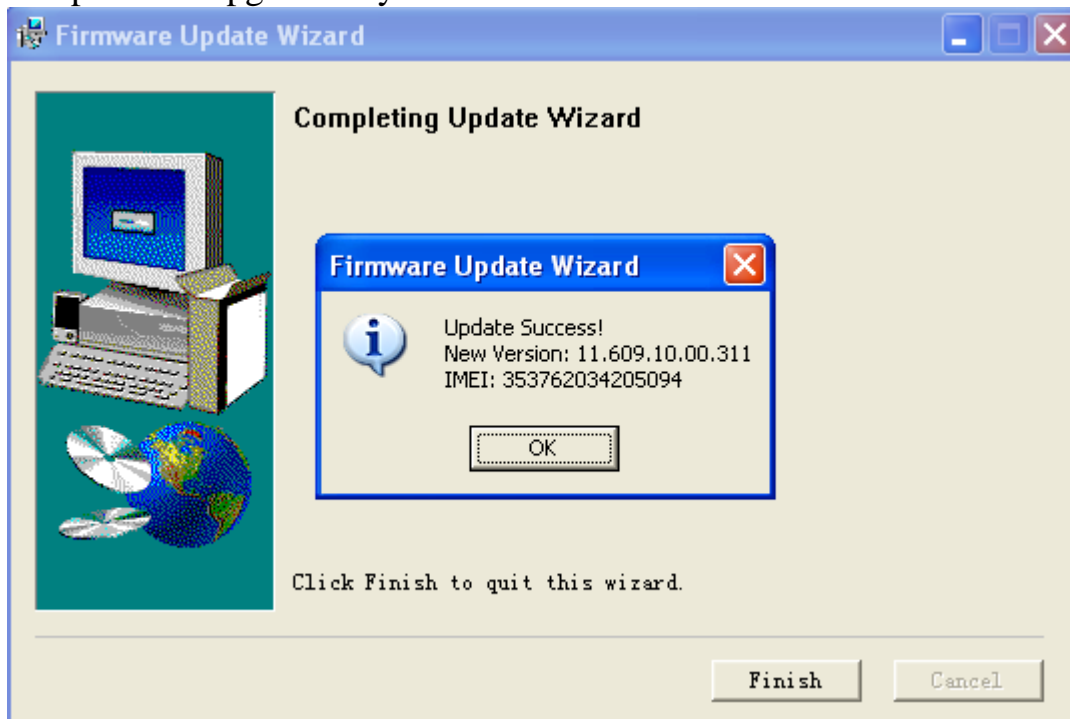
8. Click “Start” for the upgrading process to begin.



9. A screen will pop up to show the progress of the update.




10. Once completed, an "Update Success!" pop-up will appear. Click "OK", then "Finish" to complete the upgrade of your firmware.





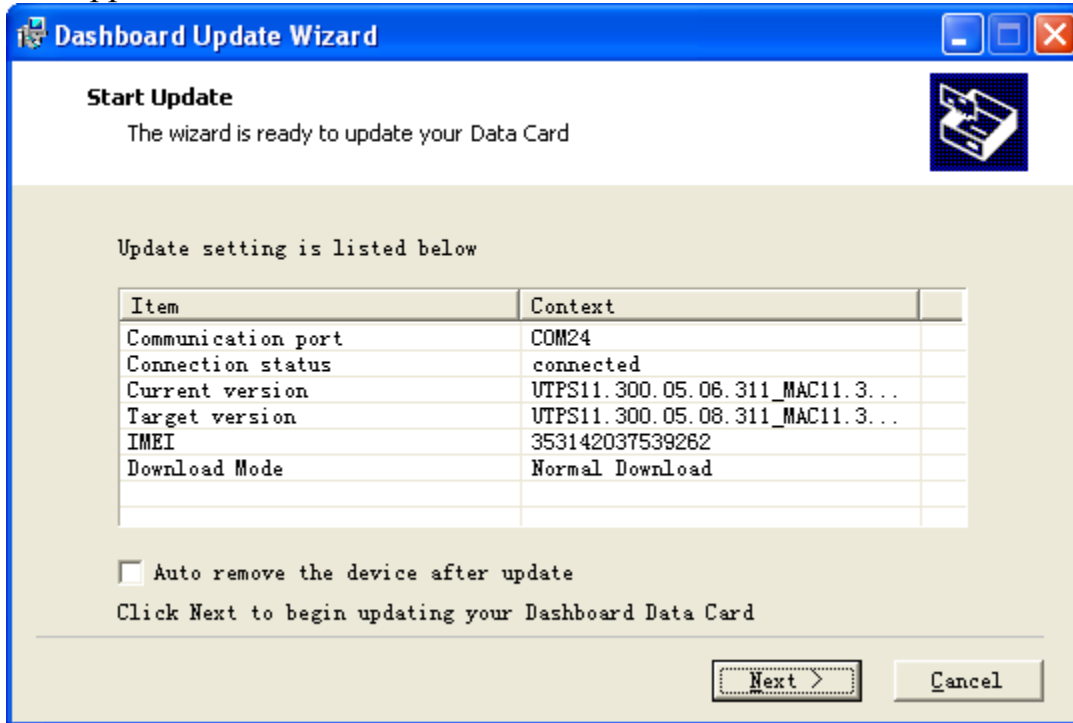
Connection Manager Software Upgrade

1. Connect the E160 USB Modem to the computer.
2. Exit your DiGi Internet Connection Manager program in order for your computer to detect the COM port.
3. Extract the downloaded file.
4. Double click on the exe file **UTPS11.300.05.08.311_MAC11.303.08.03.311**
5. A window screen will pop up.
6. Select the “I accept the agreement” tab and click “Next” to continue.

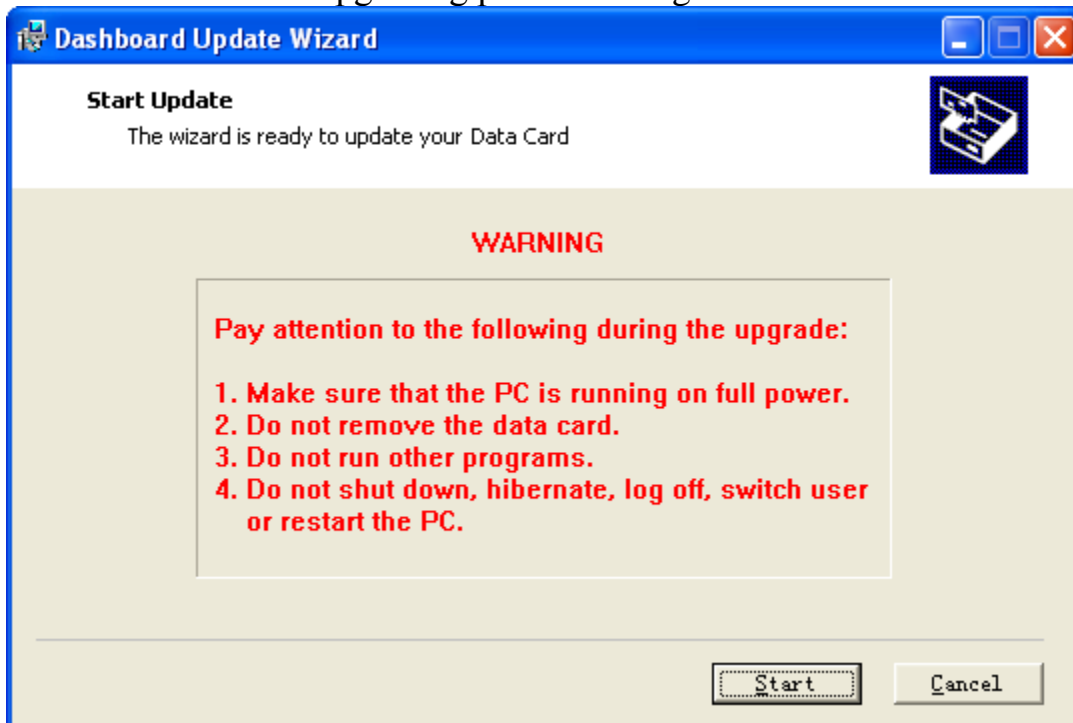
 UTPS11.300.05.08.311_MAC11.303.08.03.311



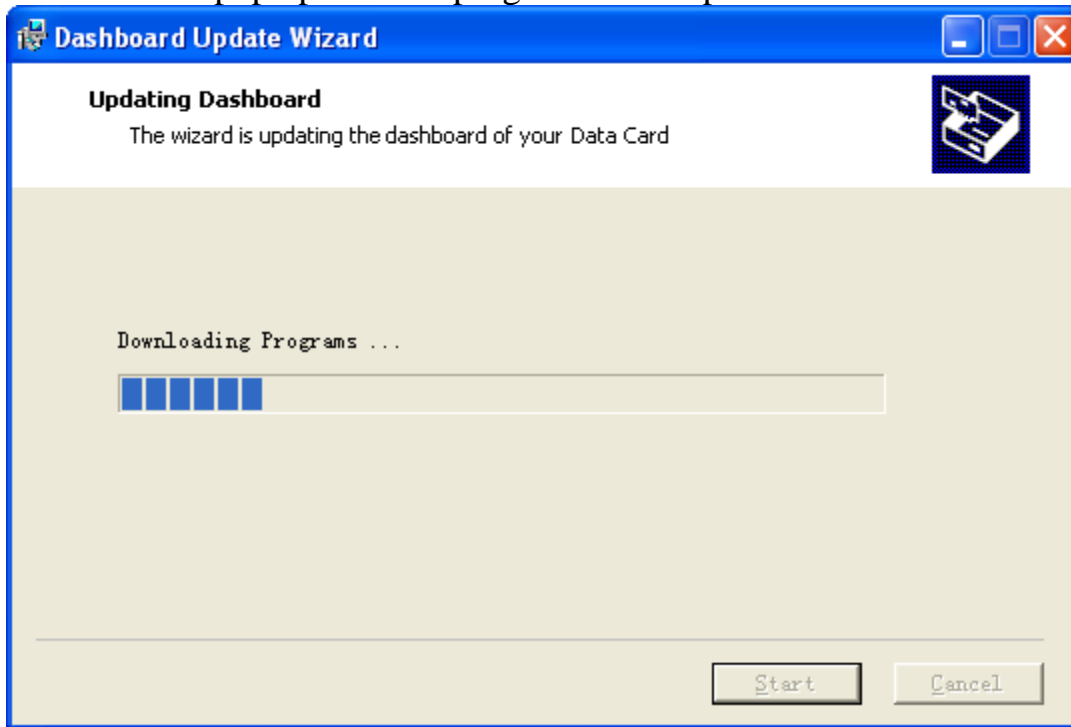
7. Your E160 USB modem COM port will be detected automatically and the details below will appear. Click “Next” to continue.



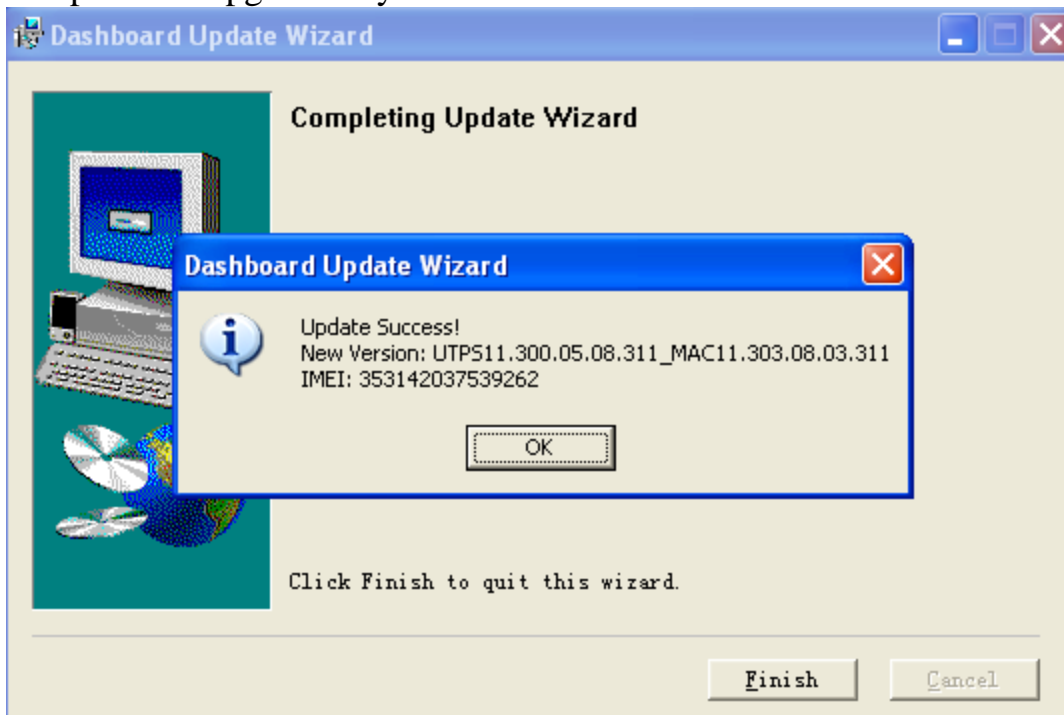
8. Click “Start” for the upgrading process to begin.



9. A screen will pop up to show progress of the update.



10. Once completed, an “Update Success!” pop-up will appear. Click “OK”, then “Finish” to complete the upgrade of your firmware.



Dashboard Update Wizard



Completing Update Wizard

Click Finish to quit this wizard.

Finish

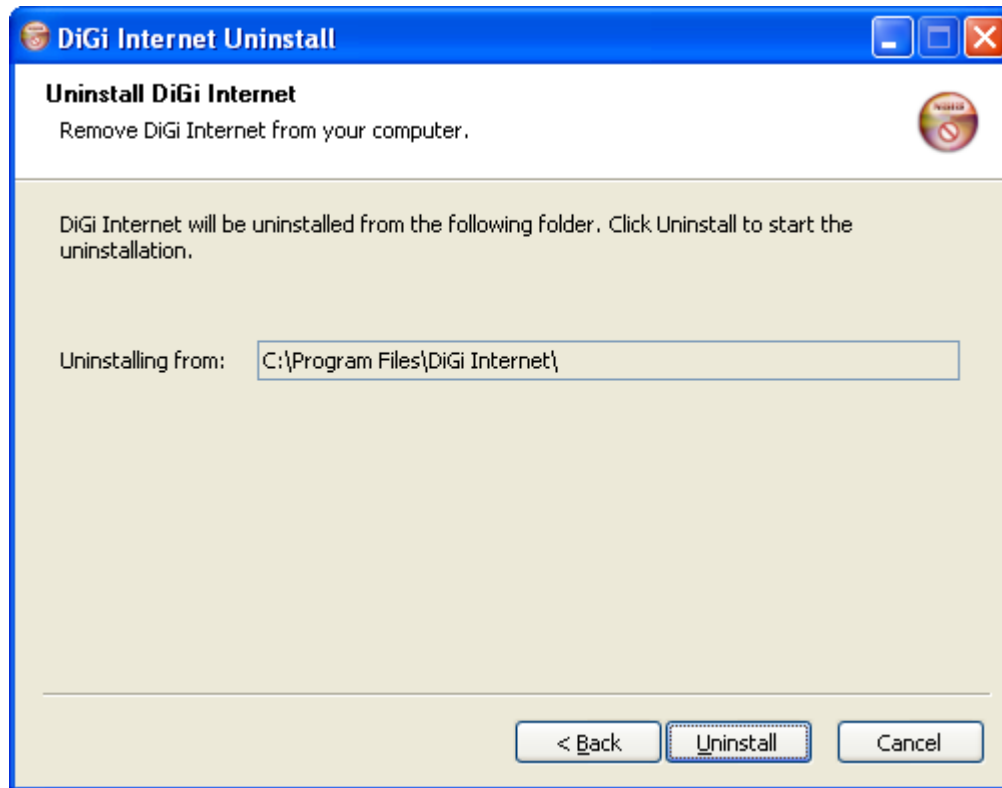
Cancel

Un-install and Re-install Connection Manager

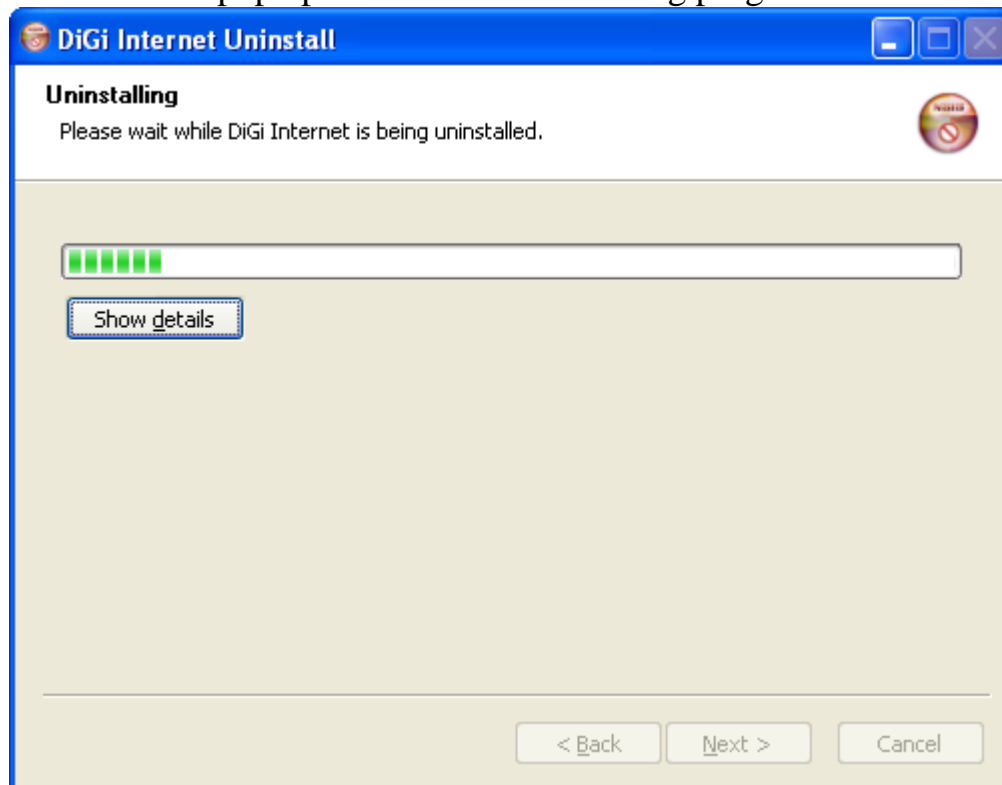
1. Go to Start>All Programs>DiGi Internet> and click “Uninstall”.
2. A window screen will pop up.
3. Click on “Next”.



4. Then click “Uninstall”.



5. A screen will pop up to show the uninstalling progress.



6. Click “Finish”

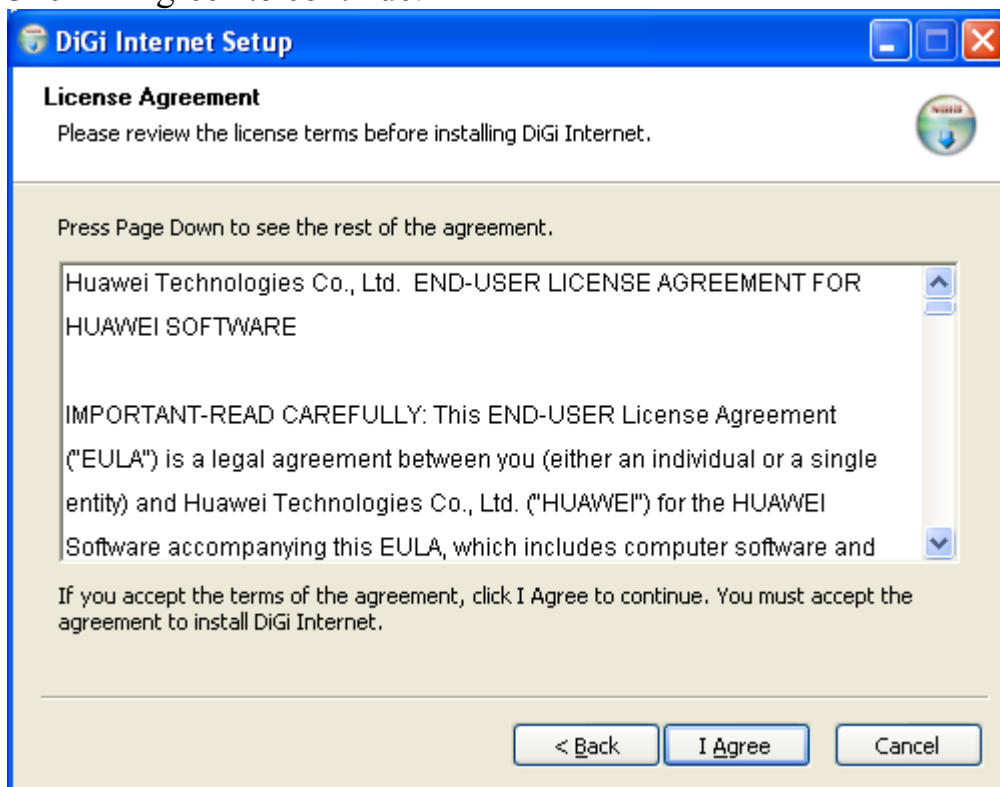


7. Manually remove E160 USB Modem and restart your computer.
8. Once the computer has restarted, plug in the E160 USB modem into your computer again.
9. Wait for the driver to be detected and installation will autorun. Please click on your CD-drive if this does not occur.
10. A window screen will pop up.

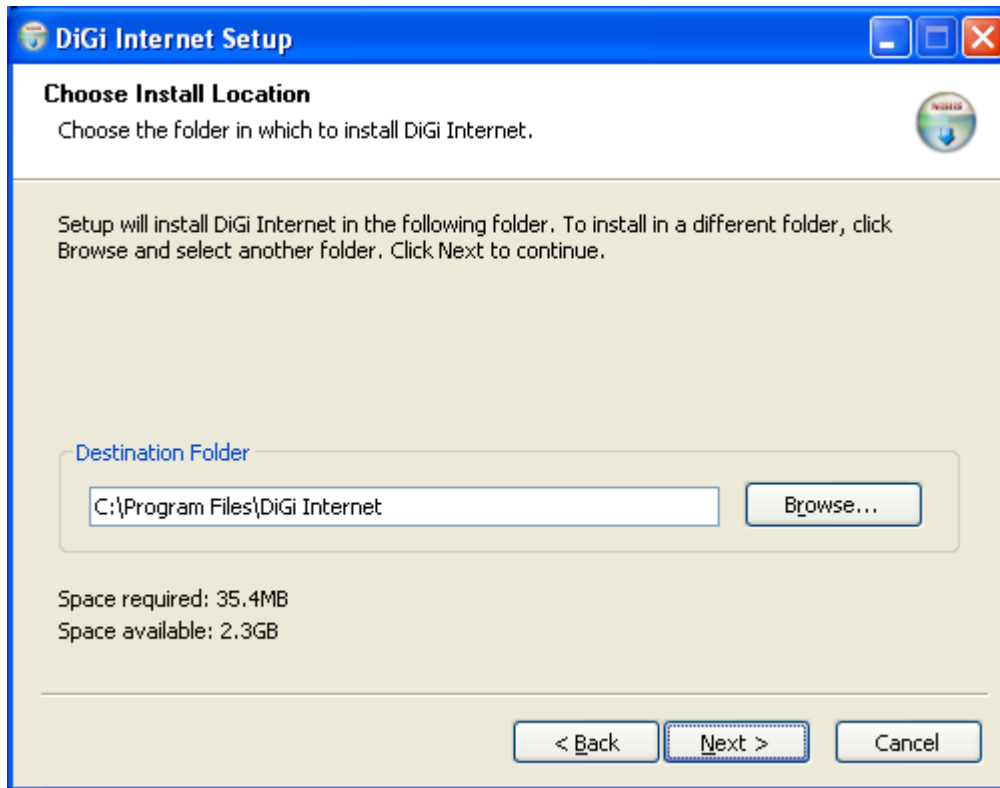
11. Click “Next” to continue.



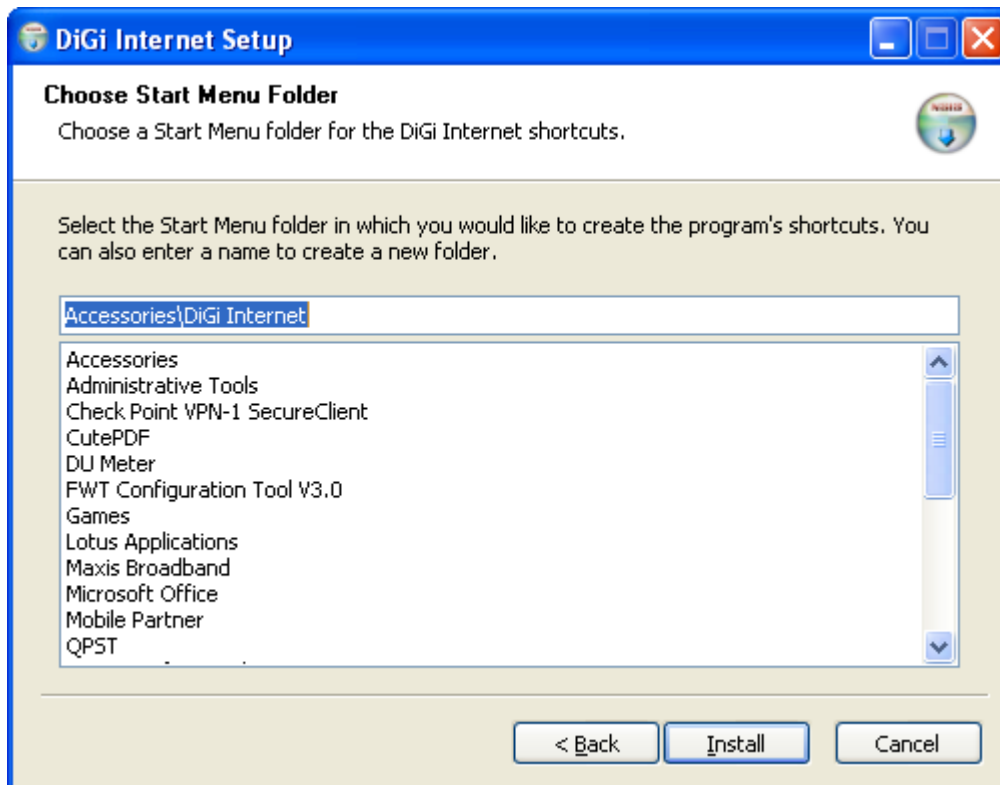
12. Click “I Agree” to continue.



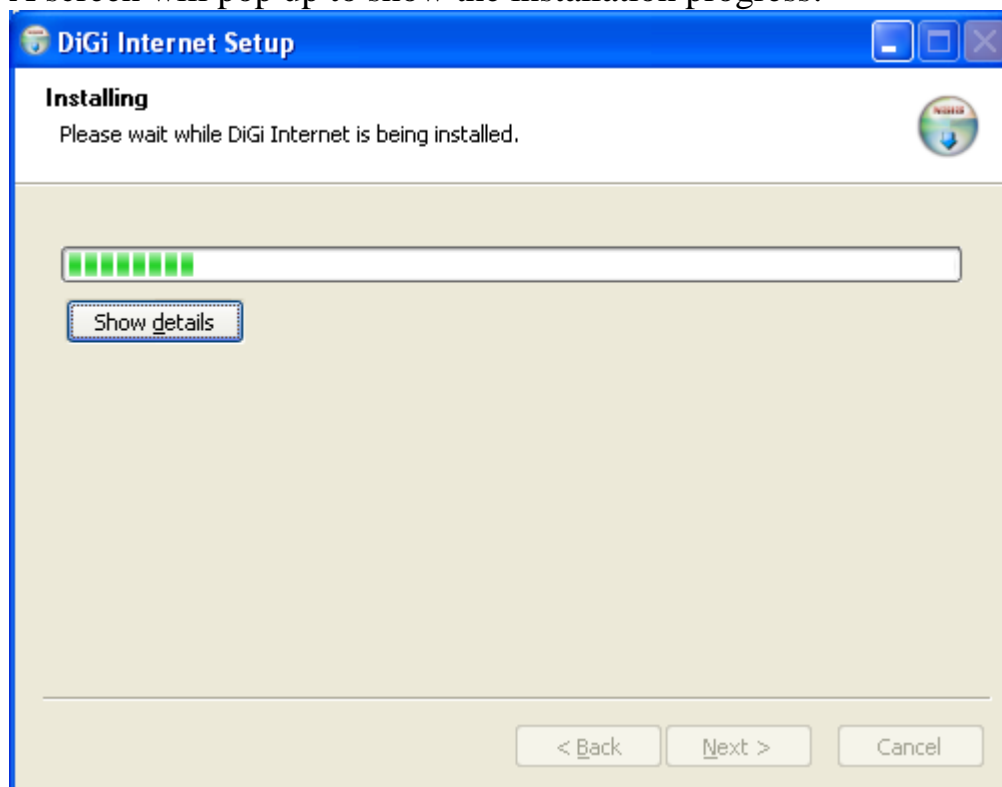
13. Then click “Next” to continue.



14. Click “Install” to continue.



15. A screen will pop up to show the installation progress.



16. Click "Finish".

