
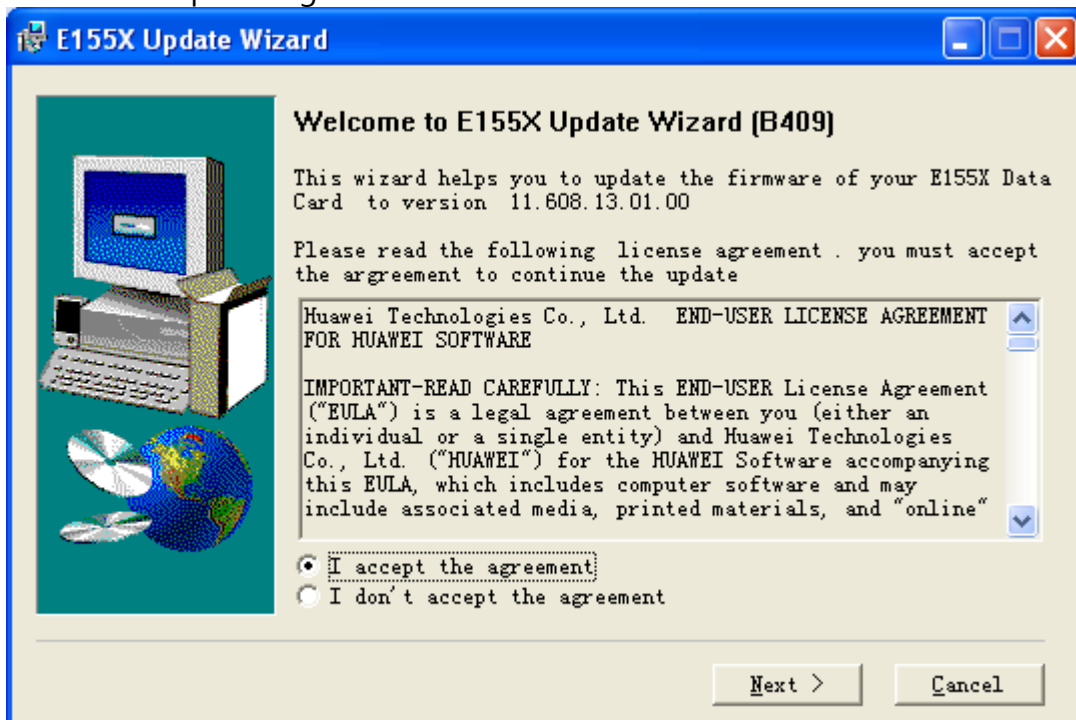




Huawei E1550/E160e/E219/E230 Software Upgrade Procedure

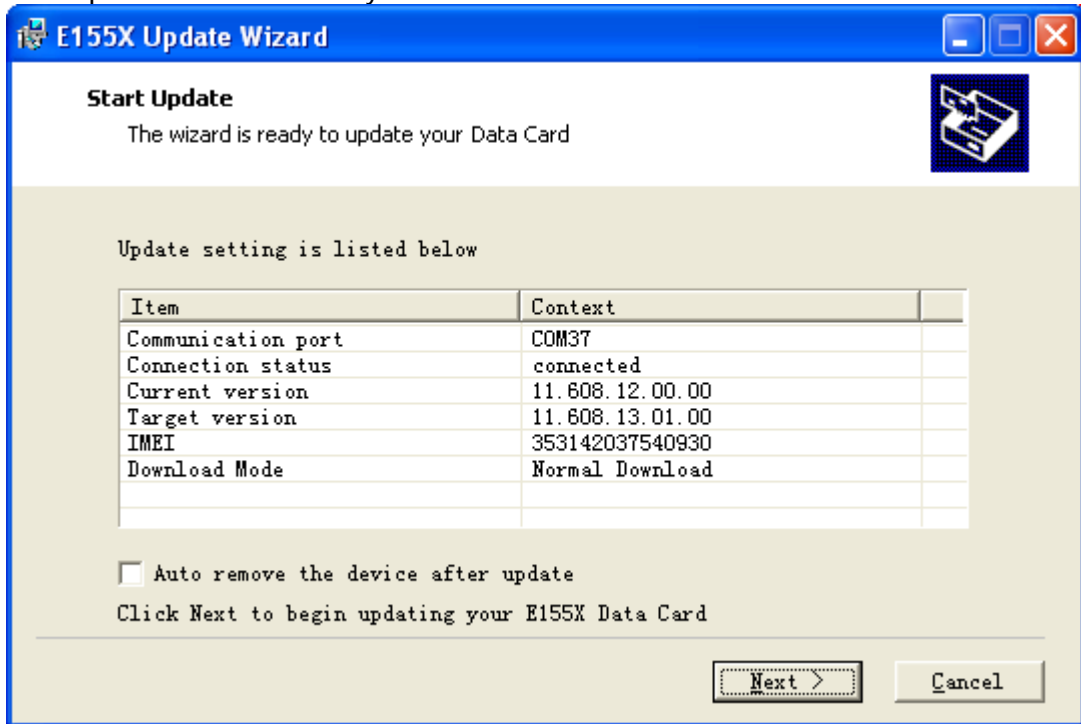
Firmware Upgrade

1. Connect your USB modem to the computer.
2. You must exit the Connection Manager (DiGi Internet) program; otherwise the COM port for upgrading will not be detected.
3. Extract the downloaded file.
4. Double click the firmware upgrading file, e.g.
E155XUpdate_11.608.13.01.00.B409.exe
 E155XUpdate_11.608.13.01.00.B409.exe
5. A window screen will pop up.
6. Select "I accept the agreement" and "Next" to continue.

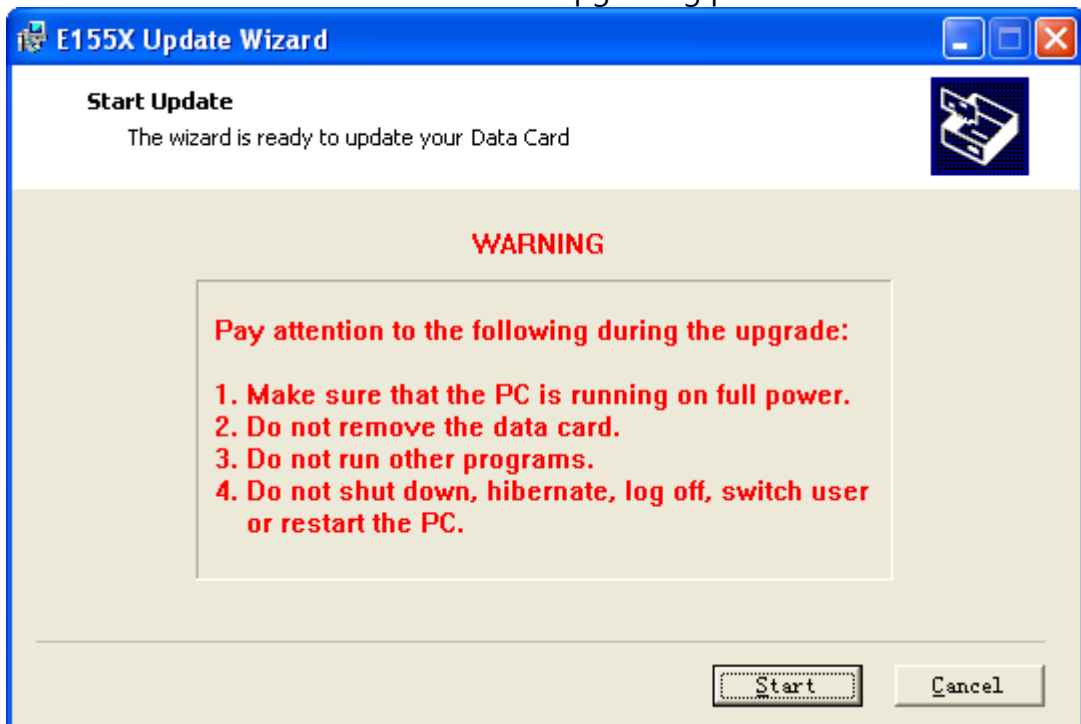




7. Select "Next" after you see the screen below. This shows that the USB modem COM port was successfully detected.

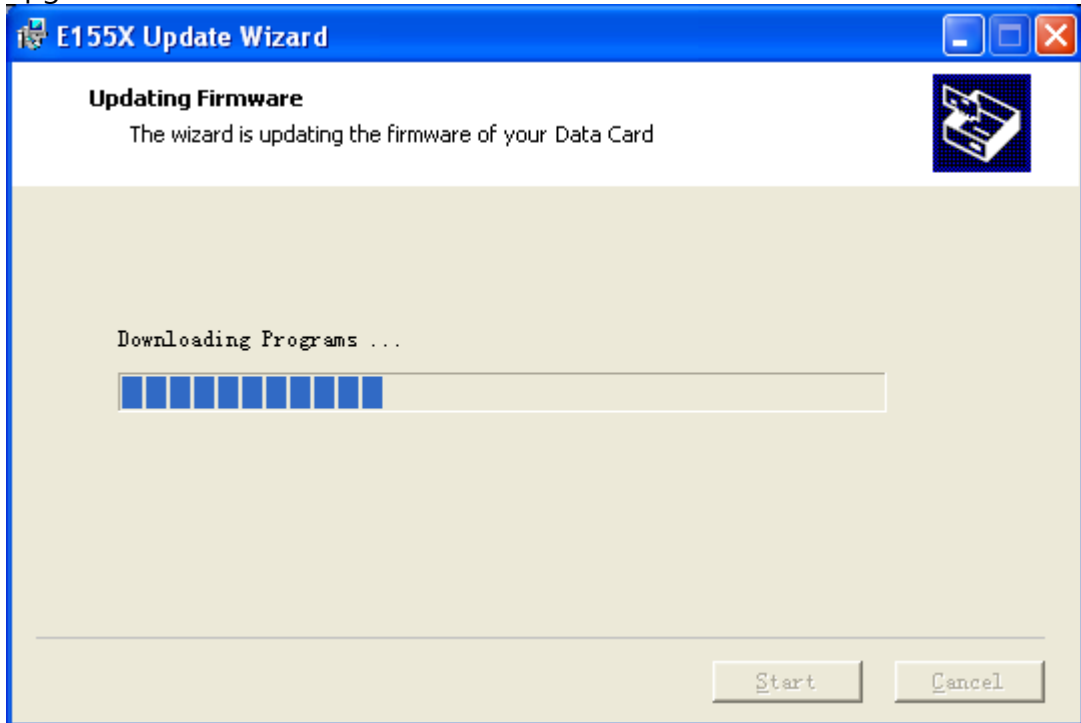


8. Select "Start" to continue and start the upgrading process.

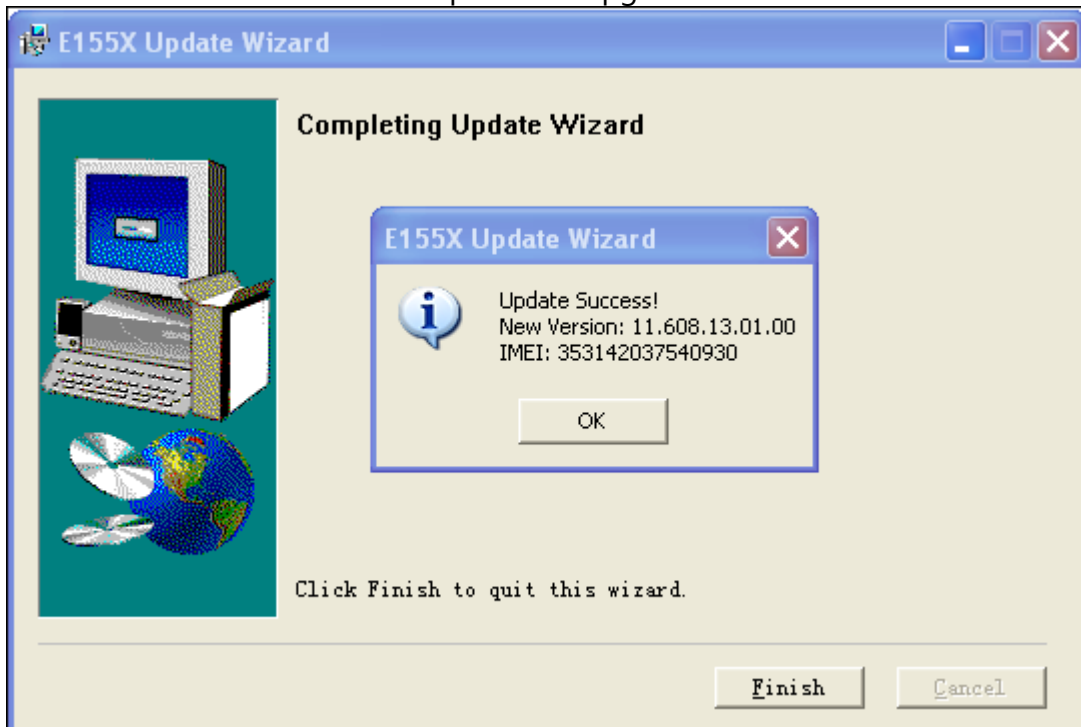


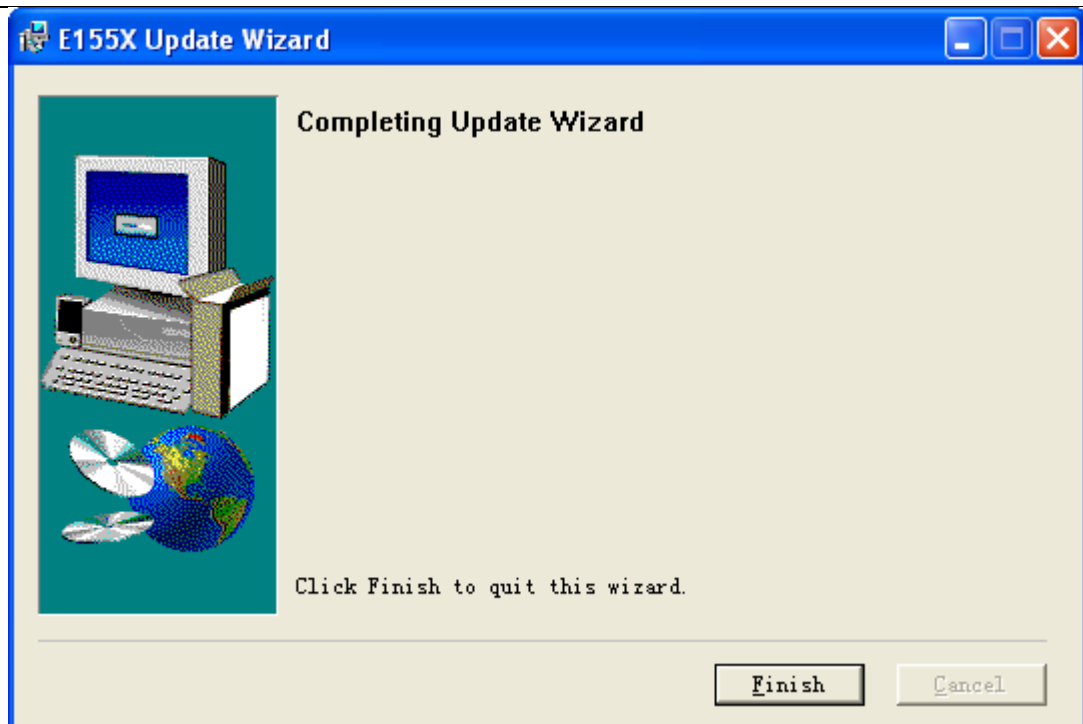


9. A screen will pop up to show the progress of the USB modem firmware upgrade.



10. Select "OK" and "Finish" to complete the upgrade.





Dashboard Upgrade

1. Extract the downloaded file.
2. Double click the "Dashboard Upgrade" file:
UTPS11.300.05.06.311_MAC11.303.08.02.311.exe
UTPS11.300.05.06.311_MAC11.303.08.02.311.exe
3. Repeat the same procedures as "Firmware Upgrade".

IMPORTANT:

1. Once the firmware and dashboard upgrade is done, please uninstall the previous version of Connection Manager (DiGi Internet) program.
2. Install the new Connection Manager (DiGi Internet) program.